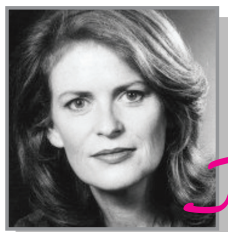




# Performance Role Play *training*



*Jocelyn*  
**Broderick**

Height: 1,68m  
 Hair: Red (Natural)  
 Eyes: Green  
 Languages: English, Afrikaans  
 Skills: Horse Riding, Singer (Soprano), Piano

## FILM

2005	# 10	Featured	dir. Darryl Roodt
2002	A Case of Murder	Support	Clive Morris Productions
1999	The Unique Oneness of Christian Savage	Support	dir. Jennifer Ussi - Australia
	Africa	Support	dir. Paul Matthews – Peakviewing UK
1998	Merlin	Support	dir. Paul Matthews – Peakviewing UK
1997	The Last Leprechaun	Support Lead	dir. David Lyster – Peakviewing UK
	Lenny	Support	dir. Nico Steyn
1990	Au Pair	Lead	dir. Heinrich Dahms – Movieworld
	Toothman & Killer	Lead	dir. Elmo de Witt- Elmo de Witt
1986	Jock of the Bushveld	Lead	dir. Gray Hofmeyer – Toronto

## TELEVISION

2011	90 Plein Street	Support	Born Free Media
2009	Scandal	Guest	Ochre Media
2007	Scandal	Guest	Ochre Media
2006	Wild at Heart	Guest	dir Nic Goding Hallmark
2005	Heartlines” “The Miners”	Support	dir. Angus Gibson
2005	Zero Tolerance III – Series	Support	dir. Sarah Bletcher
	Villa Rosa	Kyk Net	
2003	The Res I	Magistrate	The Image Factory
2002	Egoli	Frances	Franz Marx Films
1999	28 Degrees South	Supporting	Philo Pieters
	Soul City	Guest	dir. Barry Burke
	Jo’burg Blues	Guest	dir. Peter Sepuma – Endemol Productions
1998	Natural Rhythm	Lead	dir. David Lyster – The Line Productions
	Thinking About Africa	Guest	dir. Ruggero Deodato – Together Prod.
1997	Rhodes	Guest	dir. David Drury – Channel 4 UK
1996	Homelands	Support	dir. Neal Sundstrom
	Suburban Bliss	Support	dir. Peter Sepuma – Endemol
	Tarzan	Support	TZ Productions



# Performance Role Play *training*

1993	Egoli	Support	Franz Marx
	African Skies	Support	Movieworld
1992	Sweating Bullets	Support	
1991	The Tim Plewman Show	Guest	dir. Bobby Heaney
1990	Swart Kat	Support	dir. Etienne Puren – Heyns Films
1989	You Be The Judge	Support	dir. Peter Goldsmidt
1988	Arende	Lead	dir. Dirk de Villiers – C Films
1987	Reap The Whirlwind	Lead	dir. Philippe Monnier– SABC Co. Productions
1986	Orpen House	Lead	dir. Ken Leach – SABC

## THEATRE

2011	Equus (Play Reading)	Dora	dir Thorsten Wedekind
2006	Broken Glass(Play Reading)	Lead	dir Dorothy Anne Gould Civic Theatre
1996	Masterclass	Support	dir. Mark Graham – Alhambra Theatre & National Tour
1994	The Glass Menagene	Lead	dir. Karoly Pinter - Civic Theatre
1989	Hamlet	Lead	dir. Murray McGibbon – Natal Playhouse
	Rosencrantz & Guildenstern are Dead	Support	dir. Mark Graham – Natal Playhouse
1987	Peril at End House	Lead	dir. Rex Garner – Baxter Theatre, Alhambra Theatre
1985	Silent Envelope	Lead	dir. Aletta Bezuidenhout – Market Theatre
	To Remember	Lead	dir. Paul Denham - Alexander Theatre
	Translation	Support	dir. Bobby Heaney – State Theatre, Alhambra Theatre
	Four Stops on the Northern Line	Lead	dir. Alan Swerdlow – Alexander Theatre
	Die Potlood dief en die Engel	Lead	dir. Loius van Niekerd – State Theatre, Alexander Theatre
1984	Hotel Paradise	Support	dir. Billy Egan – State Theatre, Alexander Theatre
	Hamlet Machine	Support	dir. Dieter Reble – Arena Theatre
	Don Dinges in die Groen Broek	Support	dir. Dieter Reible – State Theatre, Alexander Theatre
	Macbeth	Support	dir. Alwyn Swart – State Theatre
	Brothers of the Head	Lead	dir. Nigel Vermaas – Arena Theatre
	My Seuns	Support	dir. Bobby Heaney – State Theatre, Alexander Theatre
1983	Dood van 'n Handelsreisiger	Support	dir. Truida Louw – State Theatre, Alexander Theatre



# Performance Role Play *training*

Die Vasvat van 'n Feeks	Support	dir. William Egan – State Theatre, Alexander Theatre
Ek Onthou vir Mamma	Lead	dir. Louis van Niekerk – State Theatre, Alexander Theatre
The Rise & Fall of the First Empress	Support	dir. William Egan – State Theatre, Bonaparte (Pieter Dirk Uys) Alexander Theatre

## CABARET

1999	From Oscar With Love	Lead	Tates
1992	Hello Today SA	Lead	dir. Eric Hutton - Touring
1991	Taboo or not Taboo	Lead	dir. Neil Lesick – Ziggies
1988	A Touch of Tonic	Lead	dir. Chris Wells – Yard Of Ale
1987	Social Dischords	Lead	Black Sun
1984	Café Decadenza M.D.		dir. Ilse van Hemert – Alexander Theatre
	Songs for the New Depression	Lead	dir. Esther Nassermus – State Theatre
1983	Cycle of Songs	Lead	dir. Didi Kriel – State Theatre

## MUSICAL

2001	Vere Principle		dir. Deon Opperman – KKN
1995	The Buddy Holly Story	Support	dir. Pierre van Pletzen – State Theatre, Baxter Theatre
1992	Peter Pan	Support	dir. Jill Gerard – Alexander Theatre
1991/2	Snow White	Lead	dir. Maralin v. Renen – Alexander Theatre
1991	March of the Falsettos Falsettoland Fest., Natal Playhouse	Lead	dir. Terence Shank - Grahamstown
1990/1	My Fair Lady	Lead	dir. Francois Swart – PACT Opera
1990	Camelot	Lead	dir. Francois Swart – PACT Opera
1985	Tarts Godspell	Lead	dir. Kevin Feather - PACT Playhouse dir. Dawn Lindburg – Civic Theatre
1984	Brothers of the Head	Lead	dir. Nigel Vermaas – PACT
1983	Robinson Crusoe	Lead	dir. John Moss – PACT
1982	The Wizard of Oz	Support	dir. John Moss - NAPAC



# Performance Role Play *training*

## AWARDS

Performance Award (Loeries) Secrets and Lies for Hecate on Aids Pandemic  
Buddy Holly Story AA Vita Best Production  
Masterclass AA Vita Best Production  
Total Claim Runner-up Pot Pourri Festival  
Falsestoland Best Actress AA Vita - Nomination  
Natural Rhythm Best Supporting Actress Avanti - Nomination

## TRAINING

1982 BA with 1st in Drama at University of Natal

## FACILITATION/ TRAINING/ ROLEPLAY

Standard Bank Collections	Training; Roleplay; Forum Theatre 2010
Standard Bank Customer Experience	Training Videos
Standard Bank Customer Experience	Training; Role Play Forum Theatre
Standard Bank	Train the Trainer 2010
Standard Bank The Standard Bank Way	Training Role Play Forum Theatre
Standard Bank Homeloans	Performance Role Play Training – Performance RPT
Standard Bank Video	Linda Bianchina – Mystery Shopper
ABSA Roleplay	Learning Theatre
CLA Presentation Skills	The Perfect Pitch
Dell Training	Maurice Kerrigan
Facilitation	Win- Win Group
Facilitation Roleplay Forum Theatre	EC Consulting

## WRITING

Co-Owner The Perfect Pitch specialising in scripting; concepts; AV Scripts, Events etc  
Clients include: CI Eventing; Altitude Events; Afroasia Events; The Event Production Company; GIC Consulting; Launch Factory; 24 Carrots; 360 Degrees; Thursday Morning; FNB; ABSA; Tsogo Sun; Automobile Association

## DIRECTING/ SHOWCALLING includes

Clover Convention 2011	CL Eventing
Transnet Safety Roadshow 2011	Launch Factory
ABSA Roadshow 2010	Brand Evolution
Transnet Safety Roadshow 2010	Launch Factory
Discovery Prestige Conference 2010	



## Performance Role Play *training*

---

Botswana	CL Eventing
Clover Conference 2010 Sun City	CL Eventing
Standard Bank True Blue Awards 2010	24 Carrots
Brand Leadership Industrial Theatre 2010	Brand Leadership
FNB Homeloans 2009	FNB
Microsoft Partners Summit 2008	CL Eventing
Microsoft Tech Ed 2008	CL Eventing
Microsoft Annual Gala Dinner 2007	CI Eventing
Microsoft Annual Gala Dinner 2008	CI Eventing
Siemens Gala Dinner 2008	CL Eventing
Vodacom Year End 2008	CL Eventing
Dimension Data Women's Day 2008	CI Eventing
Eskom Enterprises Awards 2008	Altitude Events
Bankseta Women's	Altitude Events
Soweto Opera Quadro 2008	AfroAsia Events
ABSA FiresideTales 2007	AfroAsia Events